

## Grace Lutheran Church of Glen Ellyn

493 Forest Avenue at Pennsylvania  
Glen Ellyn, Illinois 60137  
www.graceglenellyn.org  
Return Service Requested

West Conference - Metropolitan Chicago Synod - ELCA

**MONTH OF JUNE 2023**  
**1085423-06**

Grace To You is the monthly newsletter of Grace Lutheran Church of Glen Ellyn.

Non-Profit Organization  
U. S. Postage Paid  
Glen Ellyn, IL 60137  
Permit #104



### FROM THE PASTOR

Several years ago one of my friends gave me some sour-dough starter. I'd never made bread before, and there were some strange-looking loaves at first. I'm getting better, but I'm still never quite know if I'm gonna get a loaf that looks as good as it tastes or something edible but odd.

The thing is, making sourdough is a three-day process. So when I start out to make some, I have to wait three days to see how my hopes and expectations will pan out. And I gotta tell you, I'm not a particularly patient person. That's a long three days between the time I decide I want sourdough, and the time I get to slice into all that goodness.

To begin with, I have to feed the starter. This is literal. You have to feed the little yeasties with flour to wake them up, giving them something to eat so they can grow and flourish. It takes about 12 hours to get them working at full speed, so I usually do this before I go to bed. Day 1.

The next day I mix all the ingredients, then baby-sit the dough for a couple of hours, stretching and folding it every 30 minutes to strengthen the bonds that will help the bread rise. Then it needs to proof—another 8 to 10 hours trying to ignore it while it rests and rises. Then some shaping, another 30 minutes of resting, more shaping.... And into the fridge for 18-30 hours of cold proofing. Turns out that time of resting and waiting is critical to the best bread. Day 2.

Finally, the next afternoon or evening of Day 3, I finally get to actually bake it, and hope it comes out the way I want. (It often doesn't. Tastes great, but never quite as pretty as in the pictures I see online.)

I'm going into all this because it occurs to me that this making of sourdough is a pretty decent metaphor for Grace's next steps in ministry and mission. It would be *awesome* if we could get the pastoral transition done in a week and kick off the fully-developed, gorgeous and awe-inspiring new mission the week after that. But that's kind of the equivalent of me getting a fresh hot loaf of perfect sourdough 30 minutes after I decide I want some. It's taken a lot of learning and do-overs to get the hang of it. And even then, if you're gonna do sourdough right, it just takes longer than you want it to. So does pastoral transition and new mission development.

But the work you put in *prepping* for the final outcome is important, and actually really rewarding in its own way. It's important to remember that you're taking the long route because you care about the outcome. Reigning in your impatience so you can do all the steps right makes the end product worth waiting for—whether in ministry or sourdough!



*Pastor Melody*

**GRACE TO YOU**  
**Proclaim, Build, and Serve**



## GRACE ARTS AND APPS SUNDAY JUNE 4

Calling all artists of all ages and those with art they would like to share....the Social Committee is hosting an **Arts and Aps** event on **Sunday, June 4** after worship in the narthex. We will "exhibit" artwork of Grace's members for the congregation to see while enjoying some light refreshments in the form of appetizers. Do you have some art that you have made as a hobby or profession? Do you own some artwork you would like to bring and show that day? There will be a sign-up in the narthex so we know how many tables to set up. And, if you don't have any art to share, perhaps you would like to make an appetizer to share. All are invited to stay and enjoy!!

## LUNCH BUNCH WEDNESDAY, JUNE 28

Grace Lutheran Church is sponsoring an exciting new program for Grace Seniors and neighboring community seniors! Don't miss out on this great new opportunity!

### What: Lunch Bunch

Lunch, conversation, and fun activity

When: Every 3rd Wednesday of the month 11-1:30

Where: Grace Lutheran Church of Glen Ellyn

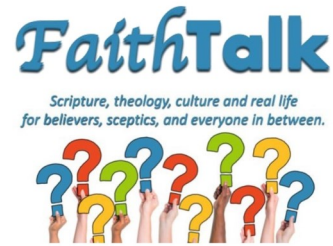
Advance sign-up is preferred – look for the sheet to be posted in the narthex.

Suggested donation of \$3.00 per person.

**Community Outreach sponsored by Grace Lutheran Church with seniors in mind.**

## A REMINDER ABOUT PASTOR MELODY'S DAYS OFF

**Pastor Melody's days off are Friday and Saturday.** If you wish to reach out to her for a non-emergency communication, it is best to do so Monday through Thursday. In particular, text messages received on her days off are most likely to get lost in the string of other texts she receives. Email is the best way to be sure she will get your message at a time when she can respond. Of course, in case of a pastoral emergency (death or serious illness/injury) you may reach out to her via phone, text or email at any time.



**Join us on Thursday, June 1 from 12:30-2:00pm.** In recognition of the first day of Pride Month, we're going to look at the movement and process in the ELCA for inclusion of the LGBTQIA+ community in the life of the church. How did the conversation get started, when did it gain steam, how did decisions about policy get made, and what is the church doing and saying today? This is a great illustration of how our faith expresses itself as a reforming movement, and how our church engages the conversations and movements that flow through, and sometimes divide, our society.

As always, even with a serious topic there's still a lot of room for laughter! Please feel welcome, even if you've never attended before. *FaithTalk* meets on the lower level.

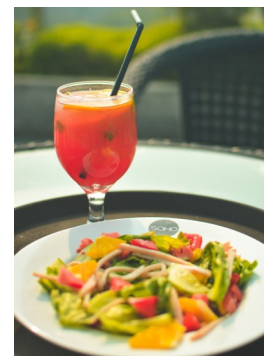
## SHARING CIRCLE

**Let's Talk About Race.** In June, the sharing circle on racial healing will be meeting after worship on **June 11 and June 25**. Using *The Little Book of Racial Healing* (by Thomas Norman DeWolf and Jodie Geddes) as a starting point, we explore the ways in which experiences of race and racial disparities are affecting our lives and our community. The format of the sharing circle is based on a mutual agreement to create a safe space for all who choose to participate and to practice deep listening as we talk about difficult topics. We will be meeting in the Great Room and all are welcome to join.

## PEOPLE OF GRACE

Please join the People of Grace for dinner and fun conversation on **Tuesday, June 20**. The group meets monthly on the third Tuesday at **7pm**. The location will vary each month to keep it fresh.

Please RSVP to Jeff Nelson at [jeff.nelson@vlses.com](mailto:jeff.nelson@vlses.com) if you are planning to attend.



## **FAITH FORMATION FOR CHILDREN AGES 2 UP TO 6<sup>TH</sup> GRADE**

Thank you to our families for a great year of Faith Formation! Enjoy summer break and look for information in August about a Fall Kick-Off to welcome a new year of growing our faith together at Grace!

If your students are interested in attending VBS this summer with our local partners in youth ministry, see the information below!

**With great JOY, our congregations invite you to join us for Community VBS in 2023: *Operation Restoration: Mending God's World!***

\*\*\* VBS VOLUNTEERS NEEDED \*\*\*

**Monday, June 26 - Friday, June 30**

**9:00 am - Noon**

First Congregational Church

535 Forest Avenue

Glen Ellyn, Illinois 60137

The theme is "***Operation Restoration: Mending God's World!***" which invites participants and volunteers to be menders in God's world. As they make connections between Bible stories and mending actions, they'll discover simple ways to live out faith in daily life. Everyone at Operation Restoration explores language and practices to mend God's world.

### FEATURES:

- \*\* A restoration theme that inspires everyone to be menders of God's world.
- \*\* Daily themes kids understand: feed, heal, forgive, pray, and rest.
- \*\* Multisensory activity centers: art, music, science and nature, service learning, and storytelling.

### NEW REGISTRATION PRACTICES FOR THIS YEAR for PARTICIPANTS:

- \*\* Initial registration has spots for 60 participants.
- \*\* Host congregations will have the first opportunity to register and then registration will open to the entire community.
- \*\* The sooner you register, the more likely you will be enrolled in the first 60 spots. Visit [FCCGE.org](http://FCCGE.org) and click the "Register for VBS" link under the MINISTRY menu tab! Suggested donation: \$20.00 for first participant and \$10.00 for each additional participant per household.
- \*\* After those initial 60 spots are filled, your registration will be placed on the waiting list. You will be notified when your registration is confirmed.
- \*\* As we CONFIRM additional volunteer small group leaders (Village Chiefs and Assistant Village Chiefs), we will notify you when your registration is confirmed.

## **CHILDREN'S MINISTRY COORDINATOR POSITION**

Grace is seeking someone to fill the position of Children's Ministry Coordinator—a somewhat pared down position previously held by Becky Ficarella. This position will focus on faith formation and events for our kids in Sunday School, and will involve working with teachers and parents, organizing curriculum and materials, working with VBS, and coordinating with the pastor on Confirmation ministry. The position will require roughly 10-12 hours per week on a flexible schedule. If you are interested, please contact Pastor Melody.



## GLEN ELLYN FOOD PANTRY MOVE UPDATE

As you can see, the information provided by the food pantry in January for them to leave by the end of the first quarter of 2023 has come and gone. We have now been informed that the food pantry plans to move to its new location next to Faith Lutheran Church by the end of the second quarter 2023!

## GINNY'S CLOSET CLOSING ON JUNE 1!

Ginny's Closet, a ministry for our seniors and food pantry clients, will continue to take place in the narthex weekdays until June 1<sup>st</sup>. Thank you to Ginny Stein and Sandra Venturoni for keeping the freecycle table available to all. Clothing and household items fly off the tables and racks almost as soon as they are put out.

As you are working on your spring cleaning at home, please remember to bring your no longer needed items in good condition to Grace asap.

### Acceptable items:

Household items; small décor; clothing (no stains) and shoes; holiday supplies; toys; outdoor wear; books; blankets, sheets, towels; art supplies; and sports equipment.

### No thanks:

Furniture; electronics, unless part of a kids' toy; large picture frames/mirrors; cassette & VHS tapes; open cosmetics; plastic containers from carry outs; kitchen items with baked on crud or rust.

## THANK YOU SANDRA VENTURONI!

Sandra and her nephew came in and washed the windows and doors, inside and out, in the west vestibule and then Sandra came back and washed ALL the windows, inside and out, in the Parish Hall.

This act of service is a beautiful reminder that if you see something that needs to be done around Grace, and you are able to do it, YOU CAN!

Grace has a small property team and while they are fantastic with repairs they have little time to take on this type of general cleaning.

Grace can provide you with any supplies you may need.

## PADS

It will be time for PADS again which is the first Tuesday of every month, in this case **June 6**. But let us first thank all the volunteers, that were able to supply enough prepared food for 150 individuals and families in need. It was a remarkable feat from our congregation and shows what people within Grace can accomplish. Thank you for helping members within our community.

Now, for June 6<sup>th</sup>, we're looking for meals (**that could feed up to 10 people**) - fresh cooked, hot or cold, that can be put in the containers that we already have. For example: a pan of homemade Chili. We do have some food supplies on hand, frozen pork loin, frozen hamburger and frozen Jimmy Dean hot sausage and sausage patties that we can supply for your cooking use.

If cooking is not an option we can always use frozen dinners or shelf stable foods and fruits like oranges, apples and bananas. Dessert items are also welcome. Please remember that a third of our guests are children when making food selections.

Of course all food donations are appreciated. If anyone has contacts with restaurants or stores who would like to help, please let us know.

Please leave donated food for PADS (**1st Tuesday of the month**) upstairs in the church kitchen via the gym. Food from the church is picked up about 2:00pm on Tuesday. Or, it can be dropped off here at our house (1N346 Prairie Ave, GE - last house on the left - 630-790-1612). We usually leave for the PADS site around 4:15pm.

If you'd like a closer look at what we do and who we serve, please join us at the IHC (Interim Housing Center) - previously a Red Roof Inn - on the south side of Butterfield just west of Highland Ave between 5pm and 5:30pm - east side of the building Room 106. We are always looking for volunteers to help us distribute the food.

Thank you so much for your support and for helping members in our community!

Joe and Donna Jacobo



**PRAYER REQUESTS**

Rich Davison, Greg Barber, Kathy Nelson, Lenore Dean, Dorothy Tracy, Luke Pajowski, Lori Garabrandt for healing and strength.

**Prayers for our Homebound Member:**

Norma Petersen

**SUNDAY WORSHIP TIME**

Sunday worship at Grace is at 10am followed by great refreshments and Christian fellowship at 11:00am.

**ZOOM WORSHIP**

We will continue to offer a Zoom link for our Sunday worship service for those who are continuing to participate from home. If you need a bulletin, remember you can view (on another device) or download/print a bulletin from Grace's website. Just click on *Quick Link to Worship*.

**Zoom link:**

<https://us02web.zoom.us/j/89031586315>

**Dial In: 1 312 626 6799**

**Meeting ID: 890 3158 6315**



A shout out to **Tim Kelly** who took time to fertilize and take care of the weeds in the lawn, mowed a couple of times and then edged everything so it's in great shape for our custodian, Julian, to take over to keep it looking nice and sharp this summer.

A shout out to **Ginny Stein and Sandra Venturoni** for cleaning up the flower gardens and putting new plants in the ground and in the vases at the handicap entrance. We receive comments all summer long on how beautiful the gardens look thanks to the dedication of these two members.

A shout out to **Cyndy Drager** who took time these past few months to rearrange all the Sunday school closets and organize the curriculum. Many bags of outdated supplies and papers went out the door easing the way for when a new Children's Ministry Coordinator is hired.

A shout out to **Paul Rom** for repairing the leak in the font.

**GRACE LUTHERAN CHURCH OF GLEN ELLYN**

West Conference - Metropolitan Chicago Synod

Evangelical Lutheran Church in America

493 Forest Avenue at Pennsylvania Avenue

Glen Ellyn, Illinois 60137

Office: 630.469.1555

Emergency Pastoral Contact: 630.674.2887

Email: [info@graceglenellyn.org](mailto:info@graceglenellyn.org)

[www.graceglenellyn.org](http://www.graceglenellyn.org)

**Every Member: Minister & Missionary!**

Melody Eastman, Pastor

Carole LoGalbo, M.S., LCPC Parish Counselor

Barbara Sudds, Office Manager

Bradford Thompson, Minister of Music

**CHURCH OFFICE HOURS**

Monday, Wednesday, Friday 9:30am - 3:00pm

Tuesday and Thursday 1:00pm - 3:00pm



**ATTENDANCE**

DATE	IN-PERSON	ZOOM
4/2	58	10
4/6	34	
4/7	48	
4/9	138	8
4/16	48	16
4/23	56	7
4/30	60	7

